



# GAT MONTHLY MEMBERSHIP PROGRESS REPORT

Results as of: 5/31/2022

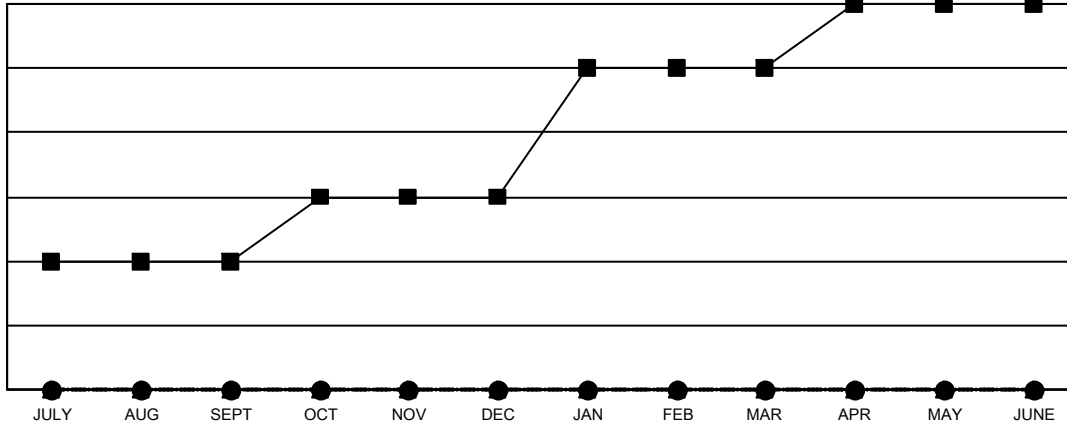
Multiple District 17

LOCATION: KANSAS

Clubs			
RESULTS FOR 2021-2022			
QUARTER	NEW CLUB GOAL	NEW CLUBS	DROPPED CLUBS
JULY/AUG/SEPT	2	0	1
OCT/NOV/DEC	1	0	1
JAN/FEB/MAR	2	0	0
APR/MAY/JUNE	1	0	0

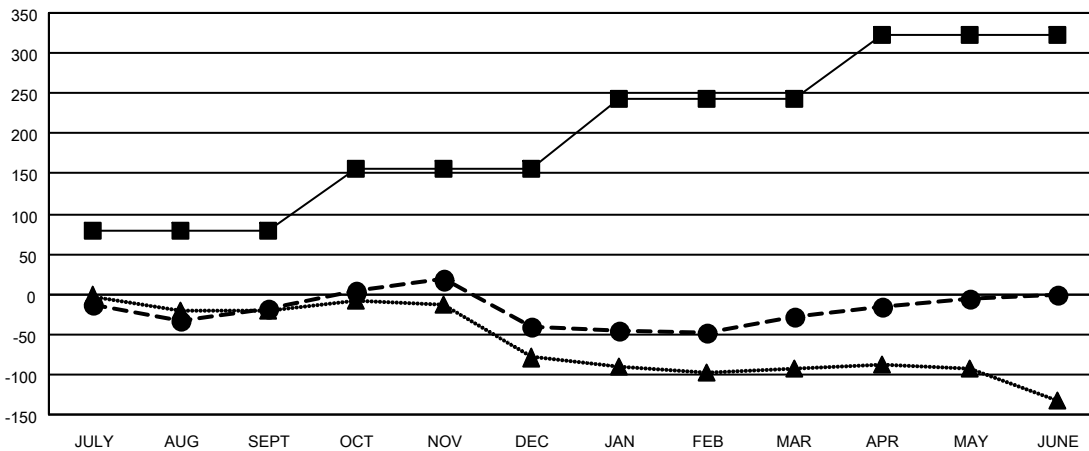
Members			
RESULTS FOR 2021-2022			
QUARTER	MEMBER GROWTH NET GOAL	MEMBER GROWTH ACTUAL	DROPPED MEMBERS ACTUAL (including transfers)
JULY/AUG/SEPT	78	97	103
OCT/NOV/DEC	78	143	155
JAN/FEB/MAR	88	110	86
APR/MAY/JUNE	78	83	60

GOALS AND ACTUAL NEW CLUBS CUMULATIVE



- CURRENT YEAR GOALS FOR NEW CLUBS
- CURRENT YEAR ACTUAL NEW CLUBS
- ▲- LAST YEAR ACTUAL NEW CLUBS

GOALS AND ACTUAL MEMBERS CUMULATIVE



- MEMBER GROWTH NET GOAL
- MEMBER GROWTH ACTUAL
- ▲- LAST YEAR MEMBERSHIP ACTUAL

DROPPED CLUBS: 2	
<b>DROPPED MEMBERS</b>	
DECEASED	65
CLUB CANCELLED	5
OTHER	334
<b>TOTAL</b>	<b>404</b>

117 CLUBS OF 216 ADDED 1 OR MORE NEW MEMBERS

[CLICK HERE FOR CUMULATIVE MEMBERSHIP DATA](#)

GENDER DISTRIBUTION	
MALE	2,879 (67.50%)
FEMALE	1,385 (32.47%)
NON BINARY	0 (0.00%)
PREFER NOT TO ANSWER	1 (0.02%)
<b>TOTAL FAMILY UNIT MEMBERS</b>	<b>967</b>
<b>FAMILY MEMBERS PAYING HALF DUES</b>	<b>492</b>